



FORT

FIRE SECURITY DOORS

From conception to completion.

Our products are manufactured in a streamlined, structured process, which employs all modern techniques and procedures of specialised services, all of which is conducted in compliance with all the standards and demands of effective quality with reliable testing and production.

We give due importance to quality and product design in the manufacturing of our premium quality security doors, to provide our customers with reliable and durable safety and security solutions.

Through our incorporation of modern technology and latest techniques, we have been able to achieve a higher degree of precision and accuracy in the production of our security doors.

We are extremely careful about the design and production of our security doors to ensure your maximum convenience and comfort. Therefore, we test each of the components of our security doors individually and separately to provide you with a product that offers an exceptional degree of functionality and utility.

We individually manage the production of each component for all our security doors to achieve a higher level of accuracy and quality. The separately manufactured components are then assembled to present a final product that is created as per your individual requirements and preferences.

FORT
FIRE SECURITY DOORS





We strongly believe that safety is an extremely important factor in life, thus we make our doors to the most impeccable standards – so they can't be penetrated from any direction.

To ensure that you're completely safe and secure at home, without feeling that you're in a bank vault or military base, we make our products discreet and stylish – but very, very effective.

As we know, a chef's lair can produce wondrous cuisines and therefore it's secret formulas must be kept from prying eyes. A solid steel inner, a multipoint locking system and a thumb turn lock - all combined with the elegance of our signature 4 horizontal line design. So, you can be at ease when making dinner with the family.



“a fitting entrance...”

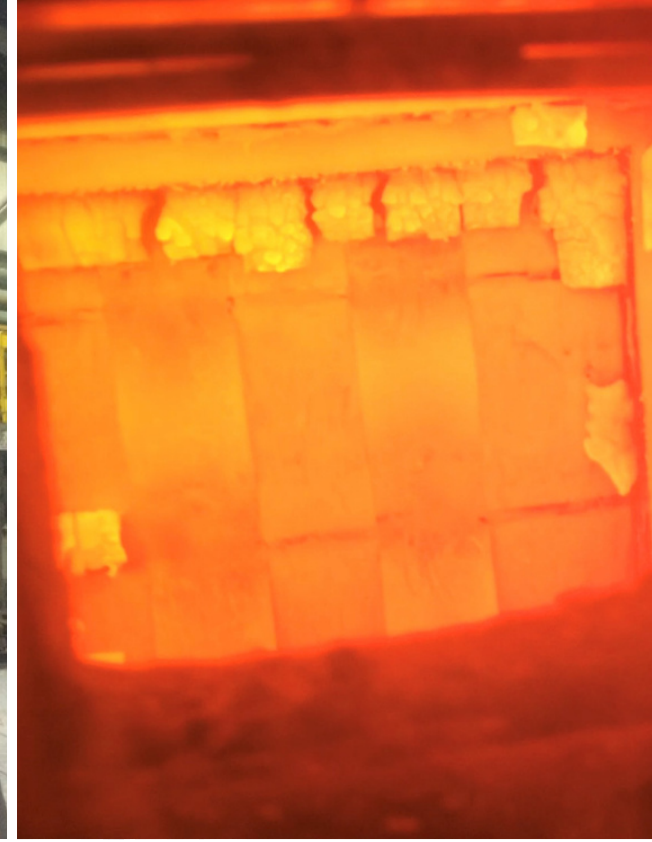
FORT
FIRE SECURITY DOORS



This home certainly oozes character and trickles with ultra-modernism. But more importantly, this gorgeous grey front door will keep its occupants and property safe behind a high-grade steel skeleton and extremely durable Medite-Triyoca cladding.

Paired alongside with an elegant 1.5-meter-long handle and aluminium inlays, this front door is a statement piece for your home.





Fire testing

Fire tests are conducted by installing a door into a furnace and then heating it up by over 1000 degrees Celsius. The other side of the door is then measured with thermocouples to ensure that the surface of the door does not exceed 140 degrees Celsius.

The test is carried out for 30 minutes, which is the requirement to achieve the British Standard EN1634-1 certification. Our door withstood over 30 minutes of fire and did not exceed a surface temperature of 140 degrees Celsius - meaning it passed and was granted with the certification.



PAS24 Static pressure

The PAS24 static pressure test is conducted by pressing down on critical points of the door such as the hinges, lock and door leaf. It was pressed with a force of 600kg and it was required to not deflect more than 10mm.

Our door did not exceed the limit therefore it passed and was awarded with the BSI EN1627:2011 (RC3) Certification.

PAS24 Dynamic attack

The PAS24 dynamic test is conducted by ramming the critical points of the door with a heavy steel bar. These points included the hinges, lock and door leaf.

The door resisted all hits from the ram and therefore it passed and was awarded with the BSI EN1627:2011 (RC3) Certification.



PAS24 Manual attack

The PAS24 manual attack is conducted by allowing the door to be attacked by various tools for a set period of time. All angles of the door are attacked including the hinges, lock and door leaf.

The attacker was unable to force entry in the required time, thus giving the door a pass and awarding it with the BSI EN1627:2011 (RC3) Certification.



LPS1175 SR2

The LPS1175 SR2 test is conducted by attacking the door with heavy tools such as crowbars, chisels and hammers for a set period of time. The door withstood all the attacks it was hit with and the attacker was unable to break in. This awarded the door with a pass and granted it the LPS1175 SR2 certification.



Sound Testing

Sound proof tests are conducted by installing a door to a wall, and on one side of the door, emitting different wave lengths of sounds from dozens of speakers - with the decibels being measured by a precise microphone.

On the other side of the door, the intensity of the sound is measured with second microphone, which then feeds the data into a computer software so that the sound proofing of the door can be accurately measured.

The test result demonstrated that the door achieved the sound insulation requirements of 43dB and thus was awarded with a pass.

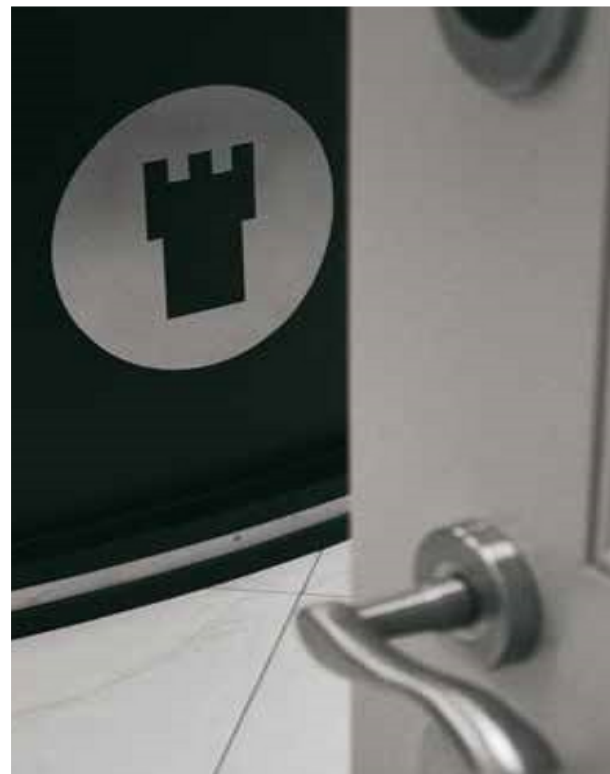




Wind and Water

Wind tests are conducted by installing the door into a sealed box and filling it with compressed air. Then the number of cubic meters of air that passes through the seals per hour is measured and our door reached the highest classification.

Water tests are conducted by having the door installed into a sealed box and having it sprayed with water from the inside - imitating the conditions of a storm. To pass, the door must not allow any water to get through and our door passed this test.



Durability Testing

Durability tests are conducted by attaching a motor to the door, handle and keylock. The door is then put through a cycle of being unlocked, opened, closed and then locked again continuously.

Our door was able to complete this cycle over 300,000 times, after which the test was concluded. With proper maintenance, our door will be able to last over 50 years of use.



The first step - Pick a design
from the following options



Edwardian 3 panel design



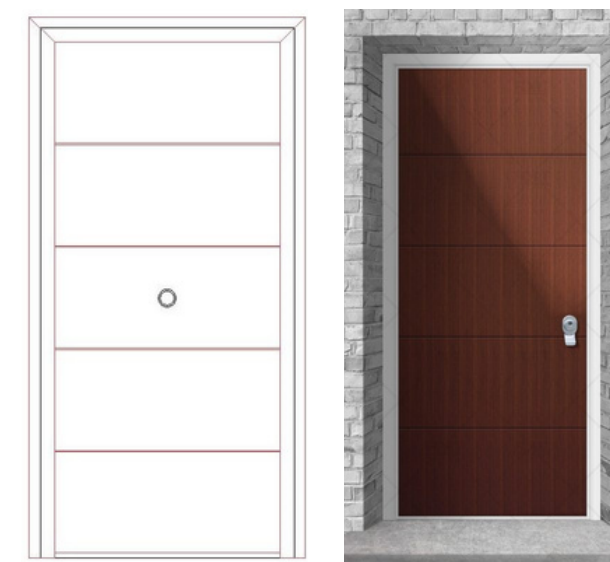
Edwardian 4 panel design



Plain Design



One Panel Design



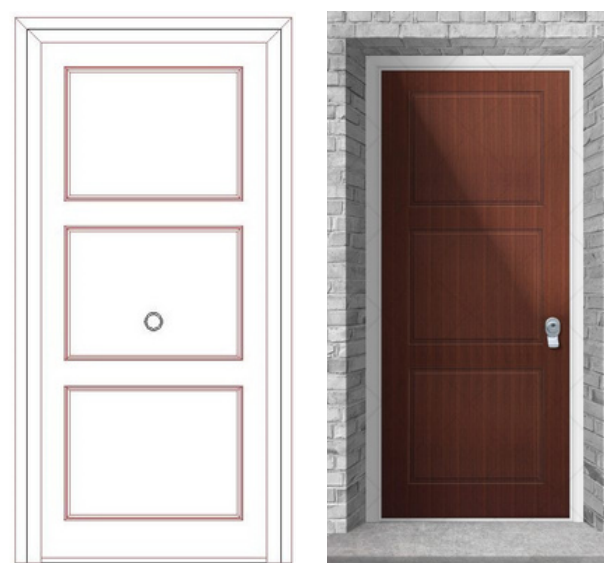
4 horizontal lines design



4 vertical lines design



Two Panel Design



Edwardian 3 equal panel design



Victorian 4 panel design



Victorian 6 panel door

The second step - Choose any colour
that you want from the following

					
Birch	Dark Oak	Mahogany	Oak		
					
RAL 9016 Traffic White	RAL 9005 Jet Black	RAL 1015 Light Ivory	RAL 3003 Ruby Red	RAL 5003 Sapphire Blue	RAL 5014 Pigeon Blue
					
RAL 6009 Fir Green	RAL 6013 Reed Green	RAL 7004 Signal Grey	RAL 7016 Anthracite Grey	RAL 8003 Clay Brown	RAL 8017 Chocolate Brown



You can rest assured with a
FORT Security Door.



Our London showroom is easy to find (just head towards the arch of Wembley Stadium, we're right next door).

4a Pop In Business Centre, South Way, London HA9 0HF

e: info@fortsecuritydoors.co.uk

t: +44(0) 203 583 0880



This office has a number of doors/windows set up showcasing the varying styles and designs but also importantly the levels of security and protection offered.

Unit 15 North Mersey Business Centre, Woodward Road, Knowsley Industrial Park, Kirkby, Liverpool, Merseyside, L33 7UY

e: info@fortnorth.co.uk

t: +44 (0) 151 345 1571



Our state of the art factory is equipped with the latest machinery and technology for the manufacture of premium quality high security doors, secure windows and panic rooms.

Bramingham Business Park, Enterprise Way, Luton, LU3 4BU

e: info@fortengineering.co.uk

t: +44 (0) 1582 592 541

FORT
FIRE SECURITY DOORS